

In today's world of advanced, high temperature, lead-free electronics, the demand for thermal profiling systems that ensure correct process settings are established and maintained is greater than ever. However, for such systems to be truly effective, their software must be easy to understand and use.

This is the philosophy behind SolderStar's powerful and intuitive Profile Central Software suite, regarded by many as the best available. It has been designed to be user-friendly for both temperature profiling novices and experts alike. Simple terminology, coupled with a heavily graphics-based interface, allows users to quickly set up and analyse their reflow and wave soldering processes.

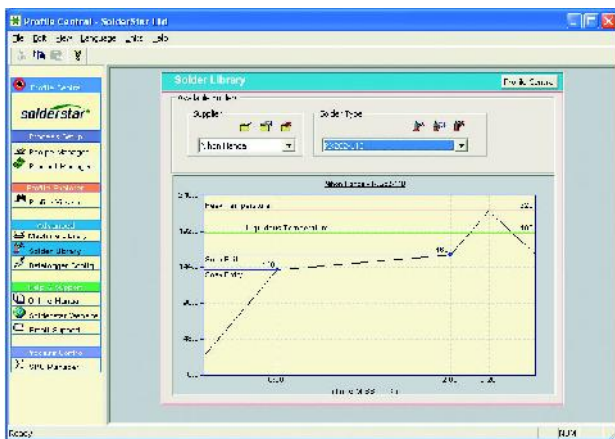
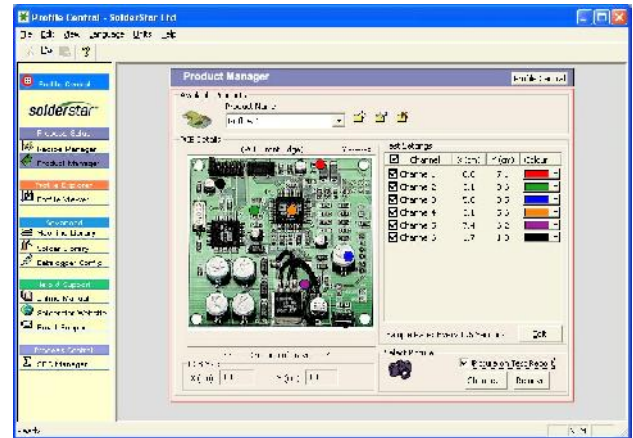
SolderStar offers three thermal profiling packages, aimed at the different technical and budgetary needs of low, medium and high volume lead-free manufacturing, namely SolderStar Lite, SolderStar Plus and SolderStar Pro. The Profile Central Software suite lies at the heart of all three packages, with various additions as your requirements grow.

Profile Central Software Includes

- Product Manager
- Solder Paste Library
- Machine Library
- Profile Explorer and Viewer
- Profile Checker
- Profile Seeker
- Test Reports
- SPC Manager
- Wave Solder Support

Product Manager

The exact profiling requirements for each separate product you make can be tailored using the product manager. Test card details, datalogger settings and sensor attachment points can be recorded here both to ease configuration of the system and also to record the process.



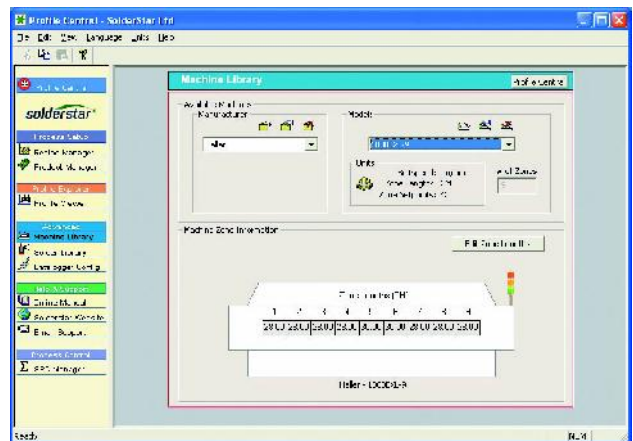
Solder Paste Library

Integrated solder paste library includes most of the commonly used solder pastes. By selecting the paste from the library, the user instantly sets process limits appropriate to the paste manufacturer's datasheet recommendations. New, updated and speciality pastes can be added using the solder paste wizard.



Machine Library

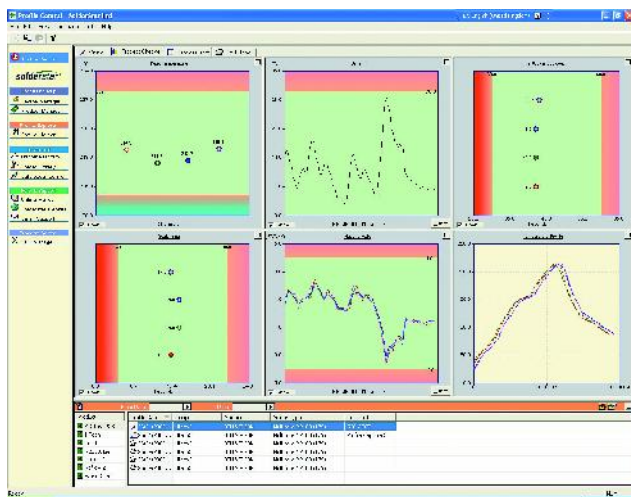
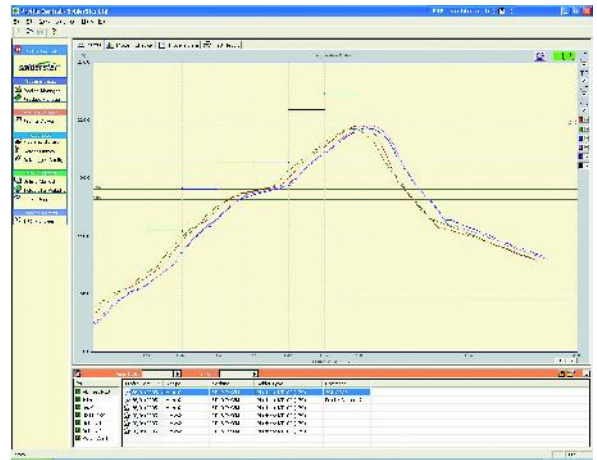
Integrated machine library includes many of the most common machines in production today. By selecting the machine from the library, the system is instantly set up for profiling on that machine.



Profile Explorer and Viewer

The profile explorer allows you to store and organise your profiles effectively. Downloaded profiles are automatically stored in a database against the appropriate product. This creates a chronological record of profiles for each product and, along with searching tools, helps provide effective process traceability.

The profile viewer allows any profile in the database to be instantly viewed. Manual measurements can be made with up to four user cursors available. Profiles can be customised by the free form annotation tools and professional, comprehensive reports generated for hard copy or emailing.



Profile Checker

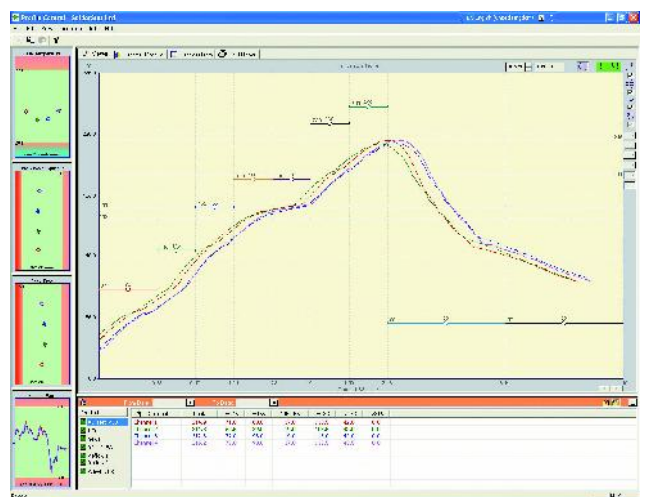
The unique graphical profile checker takes the downloaded profile and automatically calculates the process parameters of interest. It then takes the relevant solder paste information from the solder paste library and plots on easy-to-understand graphs how well each of the process parameters is centred on the available process window. Process evaluation is reduced to a single screen visual of good(green)/ bad(red) inspection.

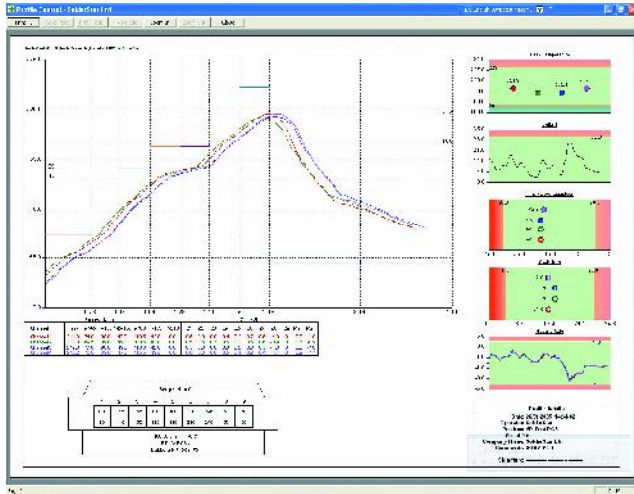


Profile Seeker

If you have ever tried to adjust a reflow process on a multi-zone reflow oven you will quickly have realised that there is a seemingly endless combination of possible zone temperatures and conveyor speed setpoints. Profile seeker is an offline simulation tool that allows the user to simulate the effect of making multiple zone changes, combined with conveyor speed changes, quickly and without impacting production.

The system shows both the effect on the temperature profile curve and the process parameters with respect to the available process window. By avoiding the usual 'tables of meaningless numbers' approach this highly graphical approach allows the user to intuitively evaluate when changes are making the process better or worse.





Test Reports

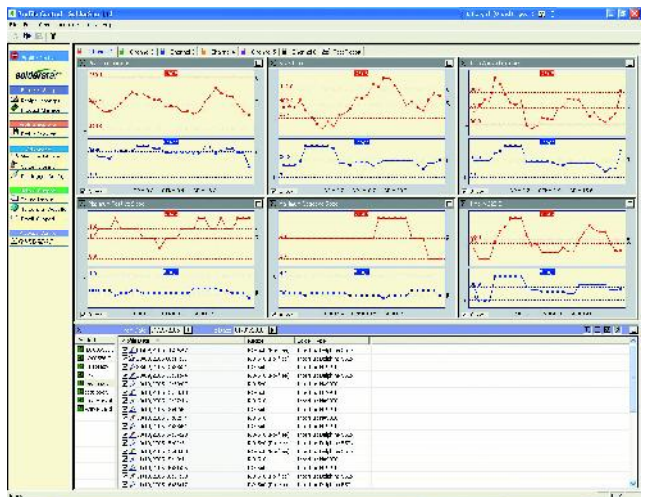
Professional, configurable test reports, containing information about products, recipes and machine settings, along with the temperature profile and process checker graphs, can be generated at the click of a mouse.

Reports can be printed or emailed to remote customers or remote sites.



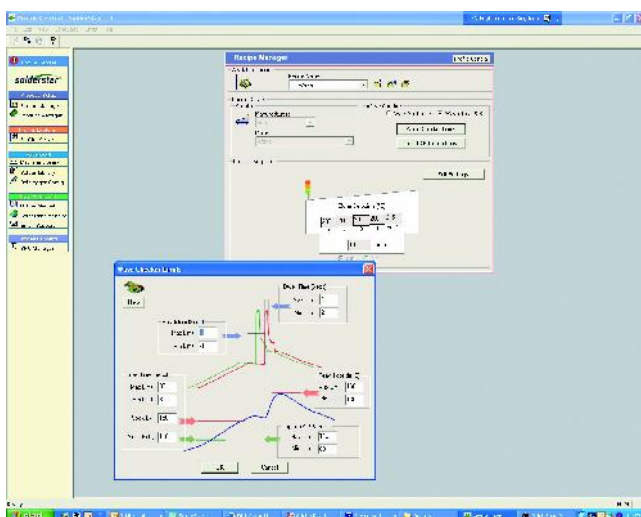
SPC Manager

SPC manager allows trends in the process to be evaluated by way of rapid construction of Xbar and Range charts. Profiles stored under each product in the database can be selected and run charts are generated with automatic calculation of Cp, Cpk and control limits. Professional process charts can be generated for hard copy or emailing.



Wave Solder Support

Profile central also includes tools for automatic evaluation of the wave solder process. Whether you are using your own wave test card or the inexpensive SolderStar Waveshuttle Plus or SolderStar Waveshuttle Pro test fixture, the tools extend rapid setup and process control to the wave solder process.



Technical Data

Compatibility:	Windows™ 95/98/ME/NT4/2000 and XP
Language support:	English, French, German, Italian, Korean, Portuguese, Spanish, Chinese (Simplified and Traditional)
Optional Upgrade:	Profile Seeker on the SolderStar Lite package
Support	Free demos and updates downloadable at www.solderstar.com

SolderStar Ltd
Manchester UK

Tel: +44 (0)1706 354846
Fax: +44 (0)1706 675296
Email: info@solderstar.com
www.solderstar.com